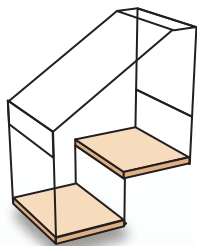




# STAIRS

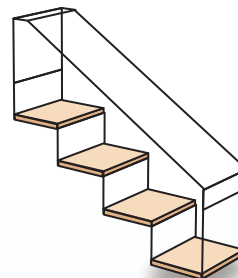
**ALL STAIRS COME WITH CEDAR STEPS AND TWO ACCESS POINTS**



## 2 STEP STAIR

**16"W x 24"L x 30"H**

Black DST20 **\$380**  
Galvanized DST30 **\$314**



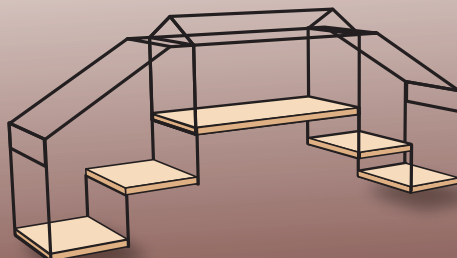
## 4 STEP STAIR

**16"W x 48"L x 46"H**

Black DSF40 **\$503**  
Galvanized DSF50 **\$437**

# BRIDGE

All Bridges come with cedar on steps and floor of tunnel and have two access points. Length indicates overall length of the bridge including steps. Bridges are 16"W x 30"H

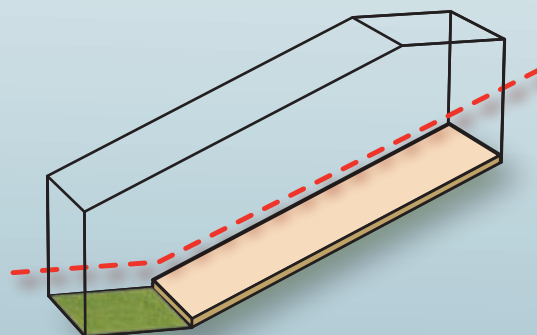


LENGTH	GALVANIZED	BLACK
60"	DB47 <b>\$622</b>	DBB47 <b>\$754</b>
66"	DB48 <b>\$646</b>	DBB48 <b>\$784</b>
72"	DB49 <b>\$646</b>	DBB49 <b>\$784</b>
78"	DB40 <b>\$669</b>	DBB40 <b>\$813</b>
84"	DB41 <b>\$669</b>	DBB41 <b>\$813</b>
90"	DB42 <b>\$693</b>	DBB42 <b>\$843</b>
96"	DB43 <b>\$693</b>	DBB43 <b>\$843</b>

# RAMP

All ramps come with cedar but can be replaced with plastic wood or artificial grass. They have two access points. The over all length is the length given. They all come with a 12" landing at the bottom. The rise of the 48" ramp is 16" and the rise of the 96" ramp is 32"

LENGTH	GALVANIZED	BLACK
48"	RP30 <b>\$330</b>	RP20 <b>\$396</b>
96"	RP31 <b>\$462</b>	RP21 <b>\$528</b>



CEDAR CAN BE REPLACED WITH PLASTIC WOOD. PLEASE SPECIFY IN THE CUSTOM ORDER FORM